



Technical excellence: delivered

Forms Part of

**Alderley**



# Case Studies

Project Type: Electrical and Instrumentation Services





Technical excellence: delivered

Forms Part of

Alderley



## Freshwater Pumping Station

Our client specialises in the design and construction of water processing and management projects.

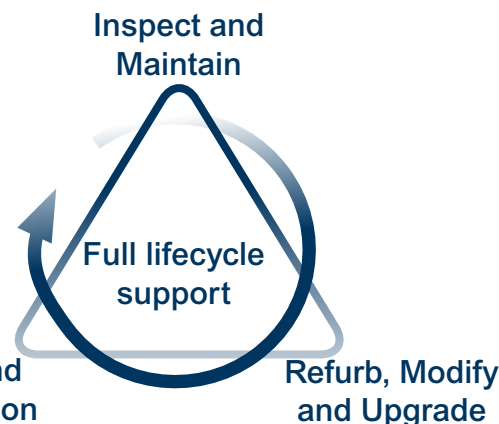
At a key site in the East of England, their high-voltage pumps, originally installed between 1968 and 1972, were no longer performing as required and there was a need to increase pumping capacity.

**The challenge:** remove, refurbish, modify and reinstall the water pumping equipment to meet today's water pumping requirements.

**The solution:** SMS provided electrical services relating to the refurbishment and construction of freshwater pumping stations. Using CompEx approved electrical technicians, our scope included small power & lighting, pump & control room switchgear, LV & MV switchgear, instrumentation and power cable installation & termination.

The project was supported by our specialist back-office team of experienced engineers and coordinators.

**The result:** The refurbished equipment provides continued, long-term service, ensuring high volume demand for water pumping is available, when required, and in an efficient manner.



## Fire and Gas E&I Installation

Our client is a leading operator in the UK North Sea, operating dozens of manned and unmanned offshore installations as well as two onshore terminals where gas is received, treated, metered and then exported into the UK National Grid.

**The challenge:** install fire and gas detection system to meet HSE requirements at a gas processing plant of strategic national importance.

**The solution:** SMS utilised both our design and installation capabilities to complete this scope. Our engineering team completed the design of the electrical cable runs, whilst our CompEx approved electrical technicians completed the site installation, testing and commissioning of power & instrumentation cables and control equipment, much of which was in a Zone 1 Hazardous Area.

Our on-site technicians also completed the fabrication and erection of cable support and management systems, with the cable supply undertaken by our global supply chain network, ensuring all items were compliant to the latest standards and available on-time and at the best value.

**The result:** The installation was completed on schedule and in accordance with client and legislative requirements.

## Choke and Kill Skids E&I Installation

SMS was contracted by a specialist provider of high-specification pressure-control equipment. The end user is a leading global provider of drilling solutions and services.

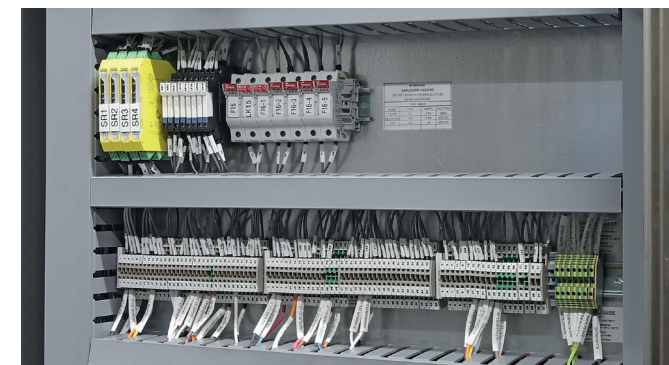
**The challenge:** complete E&I installation on Choke and Kill skids for an offshore oil and gas project.

**The solution:** SMS provided a full turnkey E&I installation service, encompassing procurement of materials, project management, installation and commissioning.

Utilising our global supply chain network, we were able to procure materials in a prompt manner to ensure we kept to the strict project deadlines.

Project management was undertaken by our in-house E&I team with on-site installation and commissioning completed by our CompEx approved electrical technicians.

**The result:** The installation was completed on schedule in an extremely tight project timeline. Both our client and the end user were pleased with the work undertaken and we are now working with them to undertake the E&I installation on a second project.



Contact [enquiries@sms-alderley.com](mailto:enquiries@sms-alderley.com) for more information